

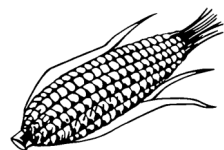
Sooninkanxannen sigiru

Les lettres en langue soninké

Troisième édition révisée,
janvier, 2016

© SIL, B.P. 218, Kayes, Mali
www.asawan.org

a A



makka

b B



buure

c C



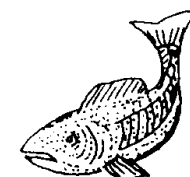
ceero

d D



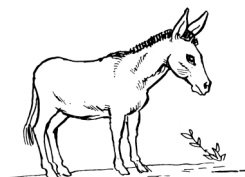
doroke

e E



ɲexe

f F



fare

g G



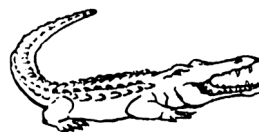
gede

h H



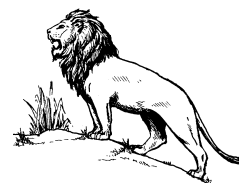
hataye

i I



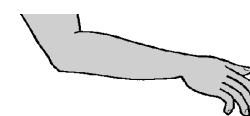
kine

j J



jarinte

k K



kitte

l L



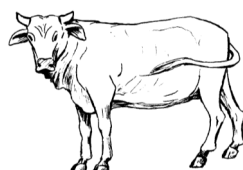
labo

m M



maajo

n N



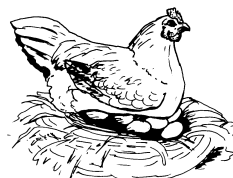
na

ɲ N



ɲanto

ŋ N



selinɲe

o O



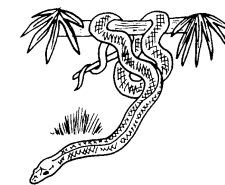
ɲogome

p P



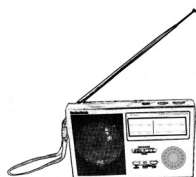
papakaye

q Q



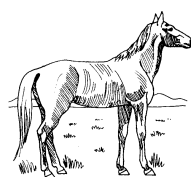
samaqe

r R



arajo

s S



si

t T



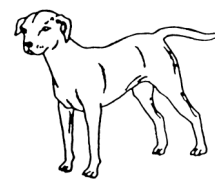
ta

u U



tullu

w W



wulle

x X



jaxe

y Y



yaaxo