

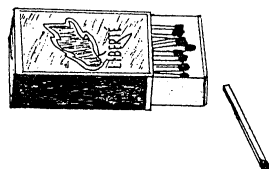
Sooninkanxannen sigiru

Les lettres en langue soninkée

Première édition
Décembre, 2008

SIL, B.P. 354, Kayes, Mali

a A



alimeti

b B



barama

c C



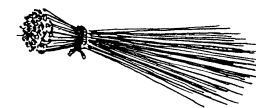
cakka

d D



doroke

e E



sellaade

f F



fune

g G



gondanme

h H



hadamarenme

i I



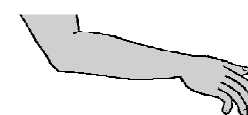
mobili

j J



jaxe

k K



kitte

l L



lanpa

m M



maajo

n N



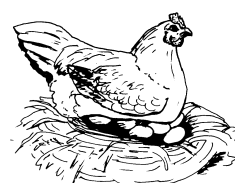
na

ɲ N



ɲanto

ŋ ŋ



seliŋe

o O



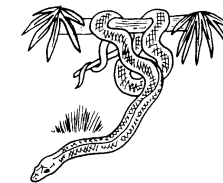
ɲogome

p P



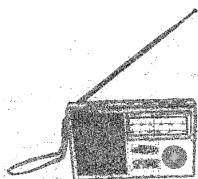
peelu

q Q



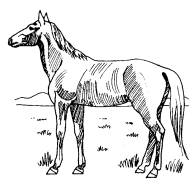
samaqe

r R



arajo

s S



si

t T



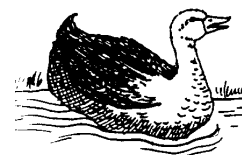
ta

u U



muusine

w W



wandalle

x X



xedo

y Y



yaaxo